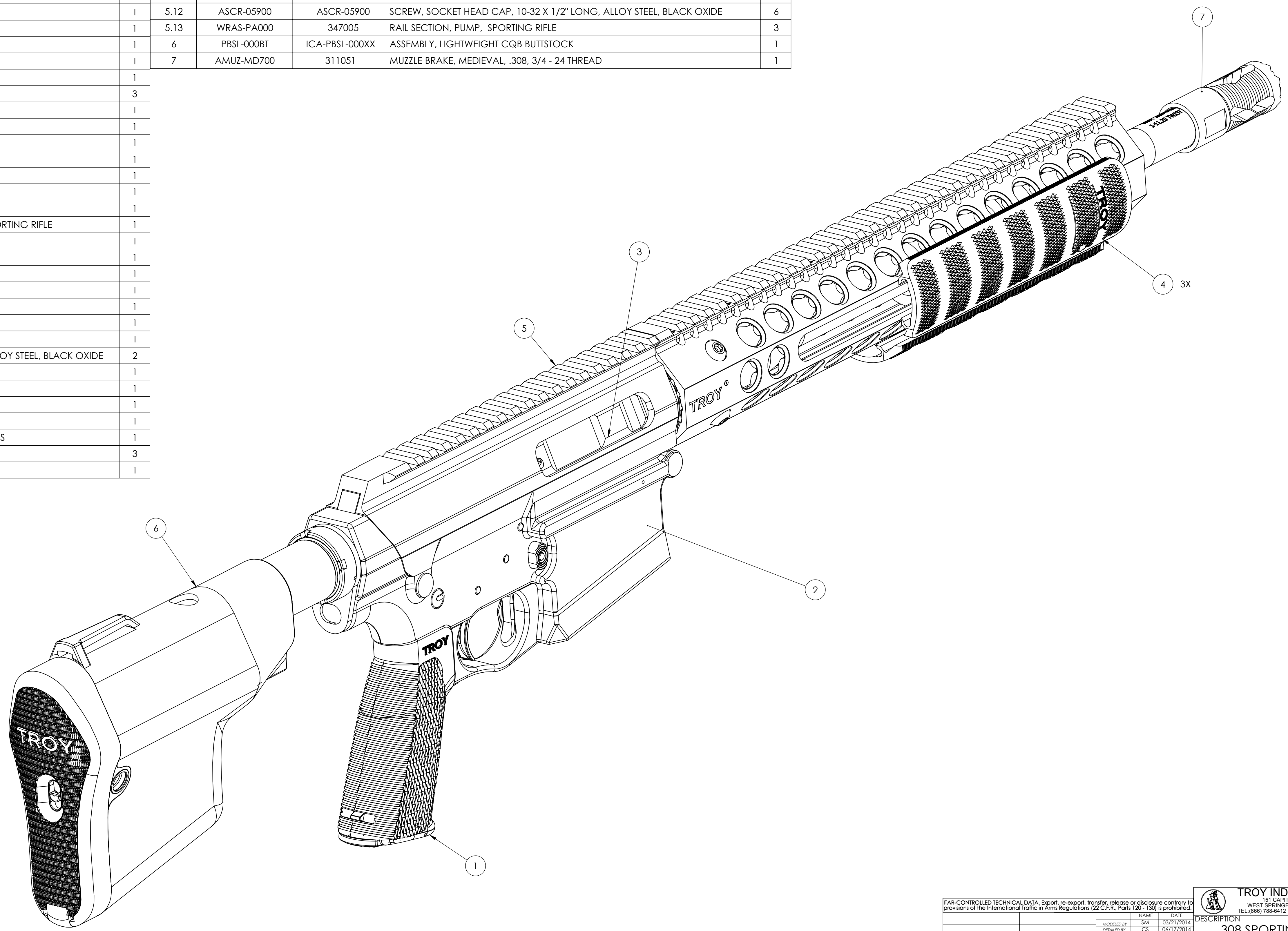
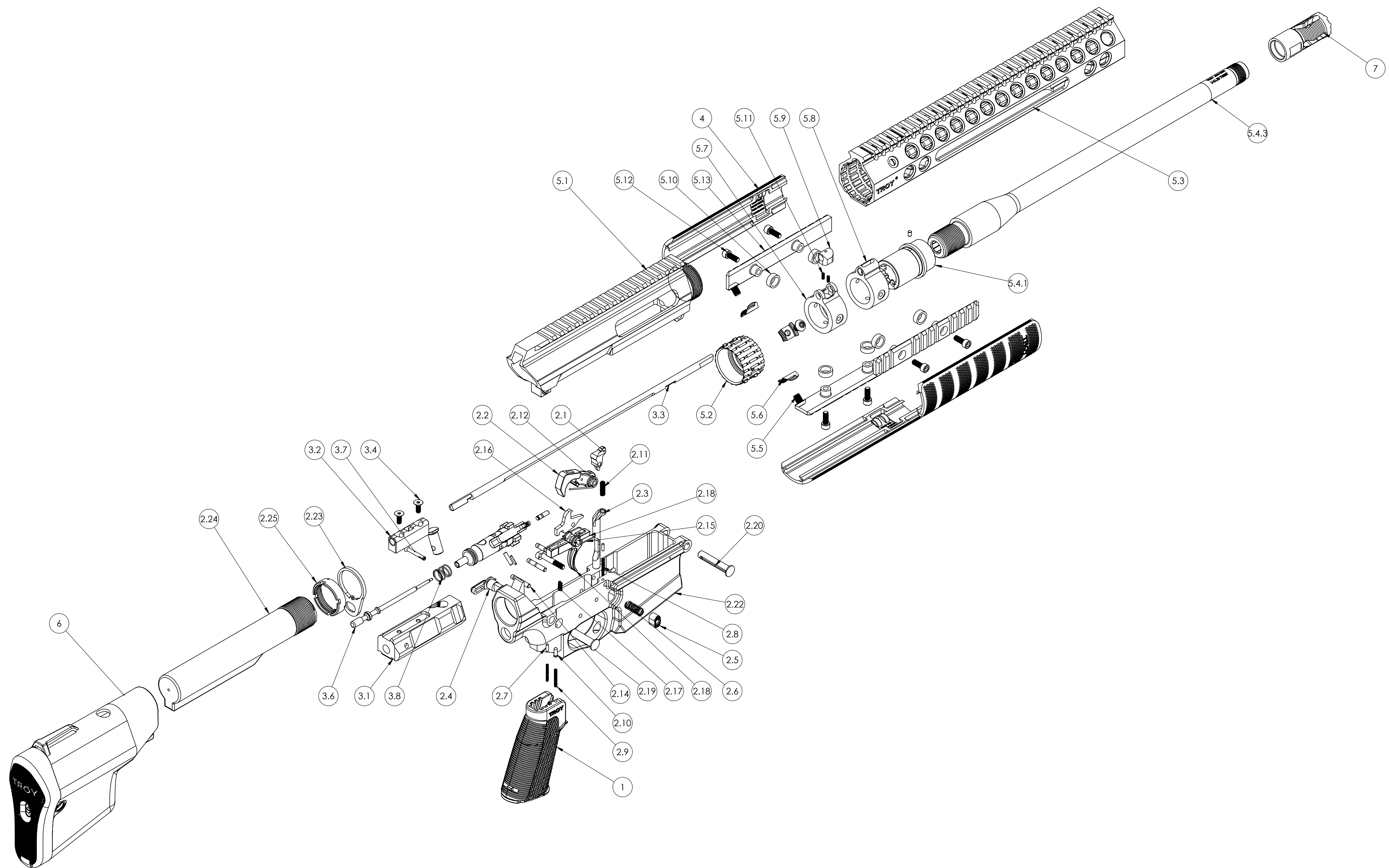


ITEM NO.	ERP PRODUCT NUMBER	PART NUMBER	DESCRIPTION	QTY.	ITEM NO.	ERP PRODUCT NUMBER	PART NUMBER	DESCRIPTION	QTY.
1	WGRP-P00B0	100054	GRIP ASSEMBLY, 2PC, TROY	1	5.2	ABN4-D0000	311021	BARREL NUT, 308 ALPHA, DPMS	1
2	SPAR-S38-16BT-01	383102	LOWER RECEIVER ASSEMBLY, .308 SPORTING RIFLE	1	5.3	RPA3-130BT	383015	RAIL, TRX EII, .308 SPORTING RIFLE, 13"	1
2.1	WBST-PA000	347015	BOLT STOP, SPORTING RIFLE	1	5.4	WBRL-6P300	383400	ASSEMBLY, BARREL AND EXTENSION, .308 WIN, SPORTING RIFLE, 1-11.25 TWIST, 16"	1
2.2	WTRG-H0000	100005	HAMMER, SEMI	1	5.5	ASCR-03700	ICC-ASCR-03700	SCREW, BUTTON HEAD SOCKET, 1/4-20 X 5/16" LONG	4
2.3	WBTT-PA000	347030	BUTTON, MANUAL RELEASE, BOLT STOP, SPORTING RIFLE	1	5.6	RTA1-00C00	PMA-RTA1-00C00	CLAMP, RAIL, ALPHA/BRAVO RAIL	4
2.4	WSAF-S0000	100006	SAFETY SELECTOR, SEMI	1	5.7	WBFR-P3L00	383009	FORE END, LOCKER, .308/.300 WSM, SPORTING RIFLE	1
2.5	WMGR-00B00	100010	BUTTON, MAG RELEASE	1	5.8	WBFR-P3G00	383010	FORE END, GUIDE, .308/.300 WSM SPORTING RIFLE	1
2.6	WMGR-00S00	100011	SPRING, MAG RELEASE	1	5.9	WRDL-PA000	347008	ROD LATCH, PUMP, SPORTING RIFLE	1
2.7	APNO-02100	100012	DETENT, TAKEDOWN PIN	3	5.10	WBUS-PA000	347004	BUSHING, PUMP RAIL, SPORTING RIFLE	6
2.8	ASPR-00100	100013	SPRING, DETENT, TAKEDOWN PIN	3	5.11	ASPR-00300	ICC-ASPR-00300	SIGHT BASE WEDGE SPRING	2
2.9	WSAF-00S00	100015	SPRING, SAFETY DETENT	1	5.12	ASCR-05900	ASCR-05900	SCREW, SOCKET HEAD CAP, 10-32 X 1/2" LONG, ALLOY STEEL, BLACK OXIDE	6
2.10	WSAF-00D00	100016	DETENT, FIRE CONTROL SELECTOR	1	5.13	WRAS-PA000	347005	RAIL SECTION, PUMP, SPORTING RIFLE	3
2.11	WBTB-00S00	100020	SPRING, BUFFER DETENT	1	6	PBSL-000BT	ICA-PBSL-000XX	ASSEMBLY, LIGHTWEIGHT CQB BUTTSTOCK	1
2.12	WTRG-HS000	100026	SPRING, HAMMER	1	7	AMUZ-MD700	311051	MUZZLE BRAKE, MEDIEVAL, .308, 3/4 - 24 THREAD	1
2.13	WMRL-S0000	100057	MAGAZINE CATCH ASSEMBLY	1					
2.14	WTRG-HP000	100027	PIN, HAMMER/TRIGGER	3					
2.15	WTRG-TS000	100028	SPRING, TRIGGER	1					
2.16	WTRG-D0000	100029	DISCONNECT, SEMI	1					
2.17	WTRG-OS000	100030	SPRING, DISCONNECTOR	1					
2.18	WTRG-T0000	100031	TRIGGER, SEMI-AUTO	1					
2.19	APNO-03600	311007	PIN, TAKE DOWN	1					
2.20	APNO-03700	311008	PIVOT PIN	1					
2.21	ASCR-04400	ICC-ASCR-04400	SCREW, SET, #4-40 X 1/8" LONG	1					
2.22		383014	RECEIVER, LOWER, STANDARD STOCK, 308/300 WSM, SPORTING RIFLE	1					
2.23	WBTH-00000	100019	PLATE, RECEIVER, END	1					
2.24	WBTO-A0000	100061	BUFFER TUBE	1					
2.25	WBTC-00000	100018	NUT, RECEIVER, EXTENTION	1					
3	WBCG-P3000	383103	BOLT CARRIER ASSEMBLY, .308 SPORTING RIFLE	1					
3.1	WBC3-CA000	383003	BOLT CARRIER, .308/.300 WSM SPORTING RIFLE	1					
3.2	WBC1-RB000	347002	PUMP ROD BLOCK, BOLT CARRIER, SPORTING RIFLE	1					
3.3	WBC3-PS000	383008	ROD, PISTON, .308/.300 WSM SPORTING RIFLE	1					
3.4	ASCR-05300	ASCR-05300	SCREW, FLAT HEAD SOCKET CAP, 8-32 X 7/16" LONG, ALLOY STEEL, BLACK OXIDE	2					
3.5	WBC3-AK000	311905	BOLT ASSEMBLY, .308, SPORTING RIFLE	1					
3.5.5	WBC3-CP000	311003	PIN, CAM, .308	1					
3.6	WBC3-FP000	383004	PIN, FIRING, 308/300WSM, SPORTING RIFLE	1					
3.7	APNO-03800	311091	PIN, FIRING PIN RETAINER, .308	1					
3.8	ASPR-03300	ASPR-03300	SPRING, BOLT, 308-300WSM, SPORTING RIFLE, LEE SPRINGS	1					
4	PCRV-600B0	PPM-PC00-X00X0	RAIL COVER, PLASTIC	3					
5.1	WURC-P3000	383002	RECEIVER, UPPER, .308/.300 WSM, SPORTING RIFLE	1					

REVISIONS				
REV.	ECR NO.	DESCRIPTION	DATE	BY
A		RELEASE FOR PRODUCTION	4/22/2015	MB



TROY INDUSTRIES 151 CAPITAL DRIVE WEST SPRINGFIELD, MA 01089 TEL: (860) 788-6412 FAX: (413) 383-0339		DESCRIPTION .308 SPORTING RIFLE ASSEMBLY
DATE: 03/21/2014	NAME: SM	REV: A
DESIGNED BY: SM	DATE: 06/17/2014	SIZE: D
DRAWN BY: CS		DWG. NO.: 383100
PROPRIETARY AND CONFIDENTIAL THE INFORMATION CONTAINED IN THIS DRAWING IS THE SOLE PROPERTY OF TROY INDUSTRIES. ANY REPRODUCTION IN PART OR AS A WHOLE WITHOUT THE WRITTEN PERMISSION OF TROY INDUSTRIES IS PROHIBITED. DO NOT SCALE DRAWING		SCALE: 1:1 .308 & .300 WSM
NEXT ASSY	USED ON	SHEET 1 OF 2
APPLICATION		



ITAR-CONTROLLED TECHNICAL DATA. Export, re-export, transfer, release or disclosure contrary to provisions of the International Traffic in Arms Regulations (22 C.F.R. Parts 120 - 130) is prohibited.		NAME	DATE
DESIGNED BY	SM	03/21/2014	
DRAWN BY	CSCS	06/17/2014	
PROPRIETARY AND CONFIDENTIAL THE INFORMATION CONTAINED IN THIS DRAWING IS THE SOLE PROPERTY OF TROY INDUSTRIES. ANY REPRODUCTION IN PART OR AS A WHOLE WITHOUT THE WRITTEN PERMISSION OF TROY INDUSTRIES IS PROHIBITED. DO NOT SCALE DRAWING			
NEXT ASSY	USED ON	APPLICATION	

TROY INDUSTRIES
 151 CAPITAL DRIVE
 WEST SPRINGFIELD, MA 01089
 TEL: (860) 788-6412 FAX: (413) 383-0339

DESCRIPTION
**.308 SPORTING RIFLE
 ASSEMBLY**

SIZE DWG. NO. **B** 383100 REV **A**

SCALE: 1:4 PROJECT: .308 & .300 WSM 2 OF 2

383100
D